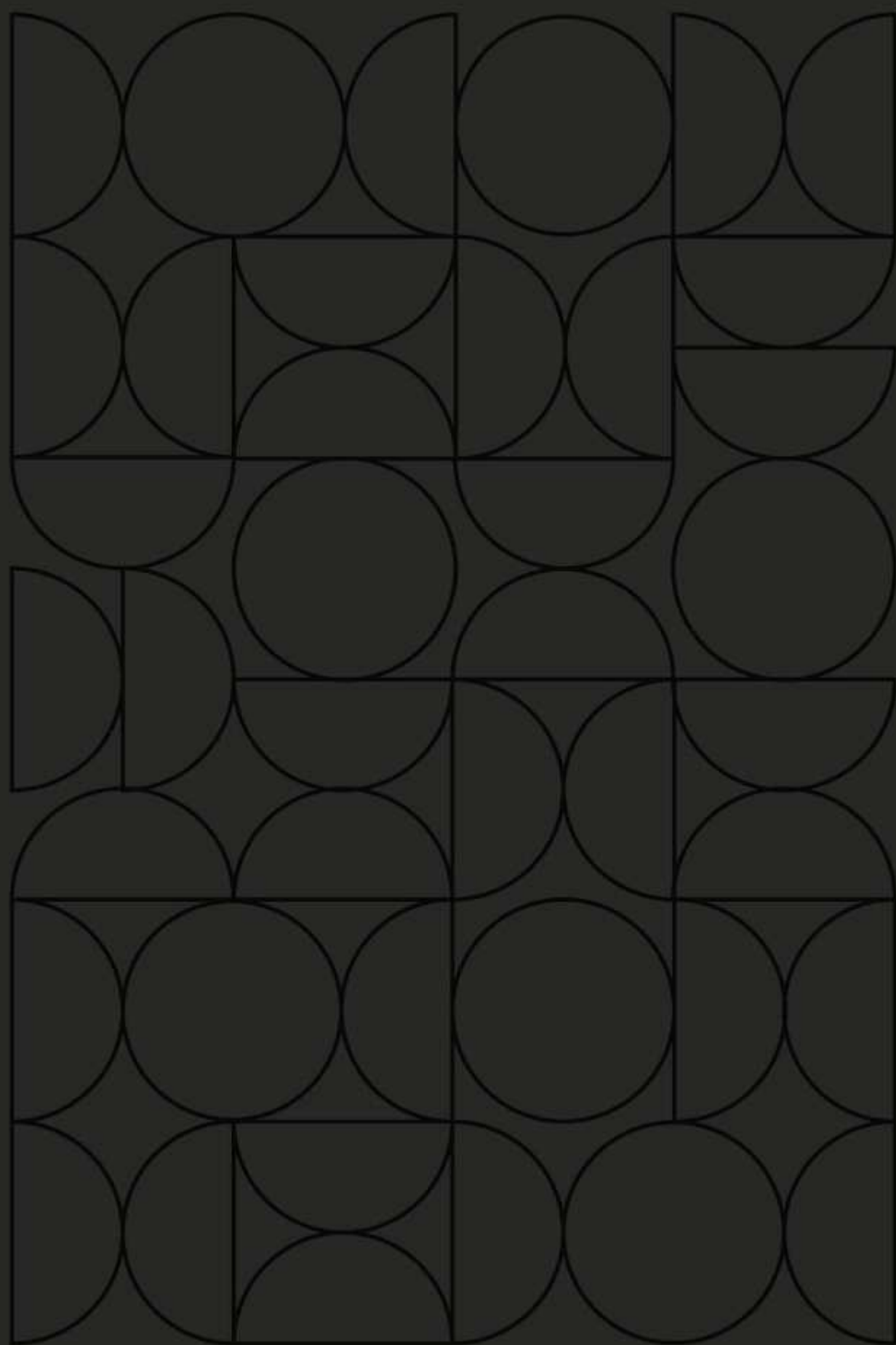


UNLIMITED LUXURY



ocean
ceramics



Together, We Can!

ABOUT OCEAN:

Introducing Ocean Ceramics, a pioneering venture in the realm of ceramic tiles, proudly established in 2024 on the vibrant landscape of Pakistan. With a vision to redefine elegance and functionality in architectural design, Ocean Ceramics embarks on a journey to deliver unparalleled quality and innovation to its esteemed clientele.

Drawing inspiration from the rich heritage of craftsmanship, Ocean Ceramics is committed to elevating the standards of tile manufacturing in Pakistan. Our extensive range of ceramic tiles encompasses a myriad of sizes and finishes meticulously crafted to cater to diverse aesthetic preferences and practical requirements.

Unlike conventional practices, Ocean Ceramics has invested in state-of-the-art manufacturing facilities strategically located within Pakistan's borders. Spanning over vast acres of land, our cutting-edge factory stands as a testament to our dedication to local production and economic empowerment.

Equipped with advanced SACMI machinery imported from Italy, Ocean Ceramics ensures precision engineering and superior quality control at every stage of production. Our relentless pursuit of excellence extends beyond operational efficiency to environmental sustainability, as evidenced by our adherence to stringent ISO standards including ISO 9001, ISO 14001, and ISO 45001 certifications.

Embracing innovation as our cornerstone, Ocean Ceramics has forged strategic partnerships with global leaders in ceramic technology such as TORRECID. This collaboration enables us to offer an extensive palette of colors, glazes, and additives, thereby unlocking endless possibilities for creative expression in architectural design.

At Ocean Ceramics, our commitment to excellence transcends mere production; it is ingrained in every tile we create and every relationship we nurture. With a steadfast focus on customer satisfaction and market responsiveness, we aspire to become the cornerstone of Pakistan's burgeoning ceramic tiles industry, setting new benchmarks of quality, reliability, and ingenuity along the way.

Our mission:

Our mission is to exceed our customers' expectations by going above and beyond. We believe in enhancing our grasp of quality and providing exceptional service and also becoming a leader in bringing cutting-edge technology to market and serving our consumers with exceptional design and a compelling value proposition, fueled by constant advancements in tile creativity, innovation, efficiency, and customer service.

Our vision:

We believe in the development of lifestyles and in being a globally innovative brand. We strive to set ourselves apart through the services and products we offer. We appreciate long-lasting values creation. We intend to increase our production capacity every year by boosting sales with our organized and scientific plans. We want RokaCeram to be a part of everyone's home.

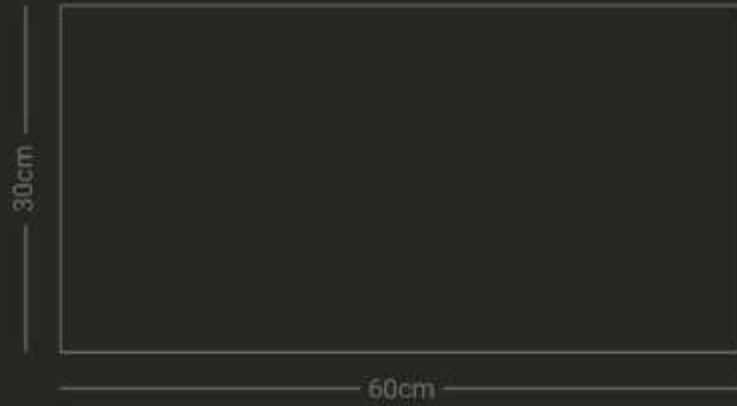
OC

FACADE ceramic tiles from Ocean Ceramics are crafted to redefine exterior elegance with durability and style. Designed to endure the elements, these tiles bring a modern, sophisticated touch to any building's facade. With a diverse range of textures, finishes, and colors, FACADE tiles not only enhance the visual appeal but also provide lasting protection against wear and weather. Ideal for both residential and commercial projects, Ocean Ceramics' FACADE tiles are the perfect blend of beauty and resilience, transforming structures into architectural masterpieces.



OC

FACADE TILES



30x60cm (12x24inch)





OC



"FACADE punch tiles in brown color add a rich, textured dimension to exteriors, blending natural warmth with modern design. Their rugged surface and earthy tone create a striking visual impact, perfect for making a bold architectural statement."



WALL



RECTIFIED



MATT



PUNCH

OC



WALL



RECTIFIED



MATT



PUNCH



MATT GLAZE | WALL TILE
300 X 600 MM

AVAILABLE FACES
04



OCMP3610001F



OCM3600035A



OC



OC



“FACADE punch tiles in dark gray infuse a sleek, modern edge into any space, with their deep hue and textured finish adding depth and sophistication. Perfect for creating a bold, stylish facade, these tiles enhance both contemporary and industrial designs.”



WALL



RECTIFIED



MATT



PUNCH

OC



WALL



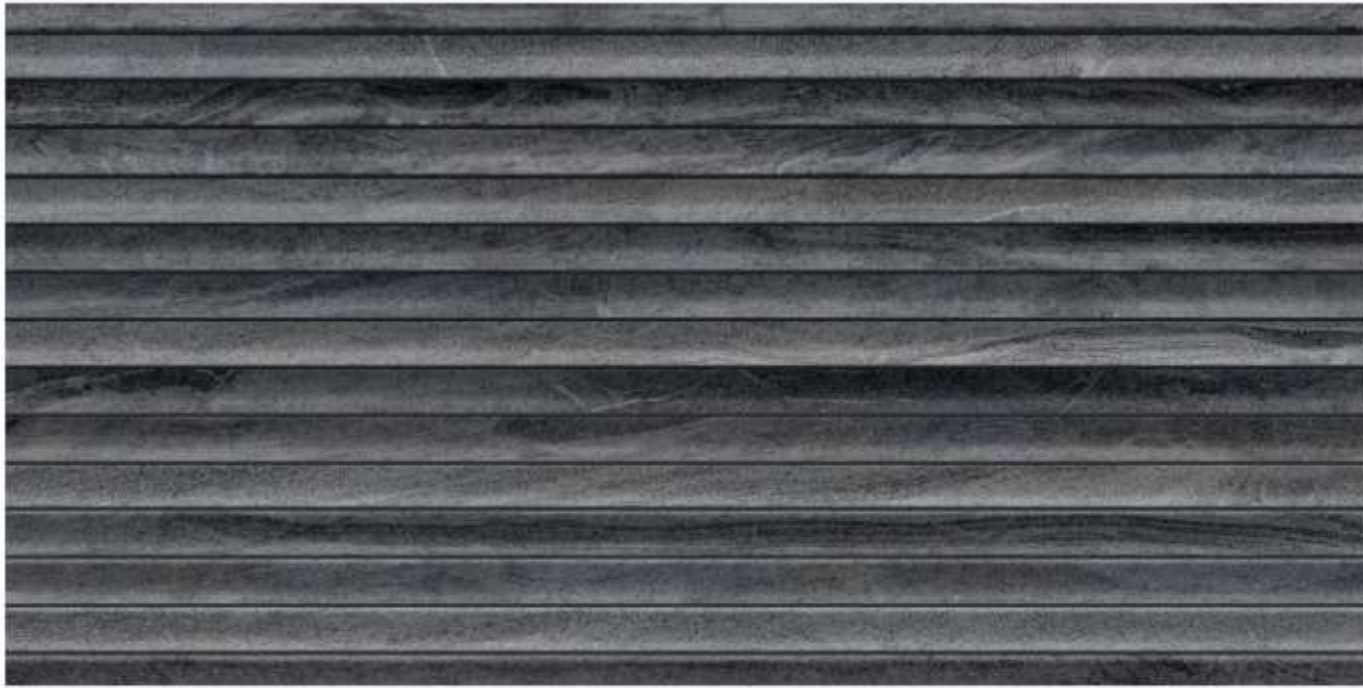
RECTIFIED



MATT

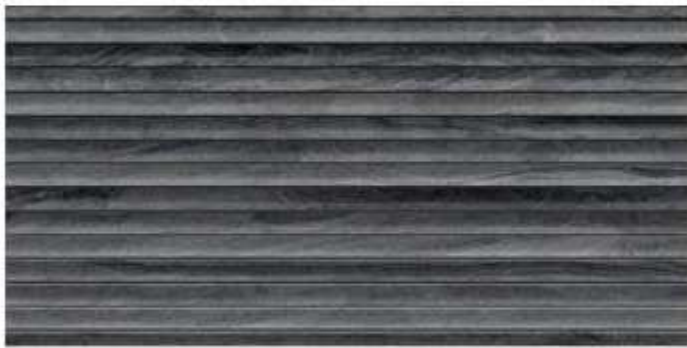


PUNCH



MATT GLAZE | WALL TILE
300 X 600 MM

AVAILABLE FACES
01



OCMP3610002F



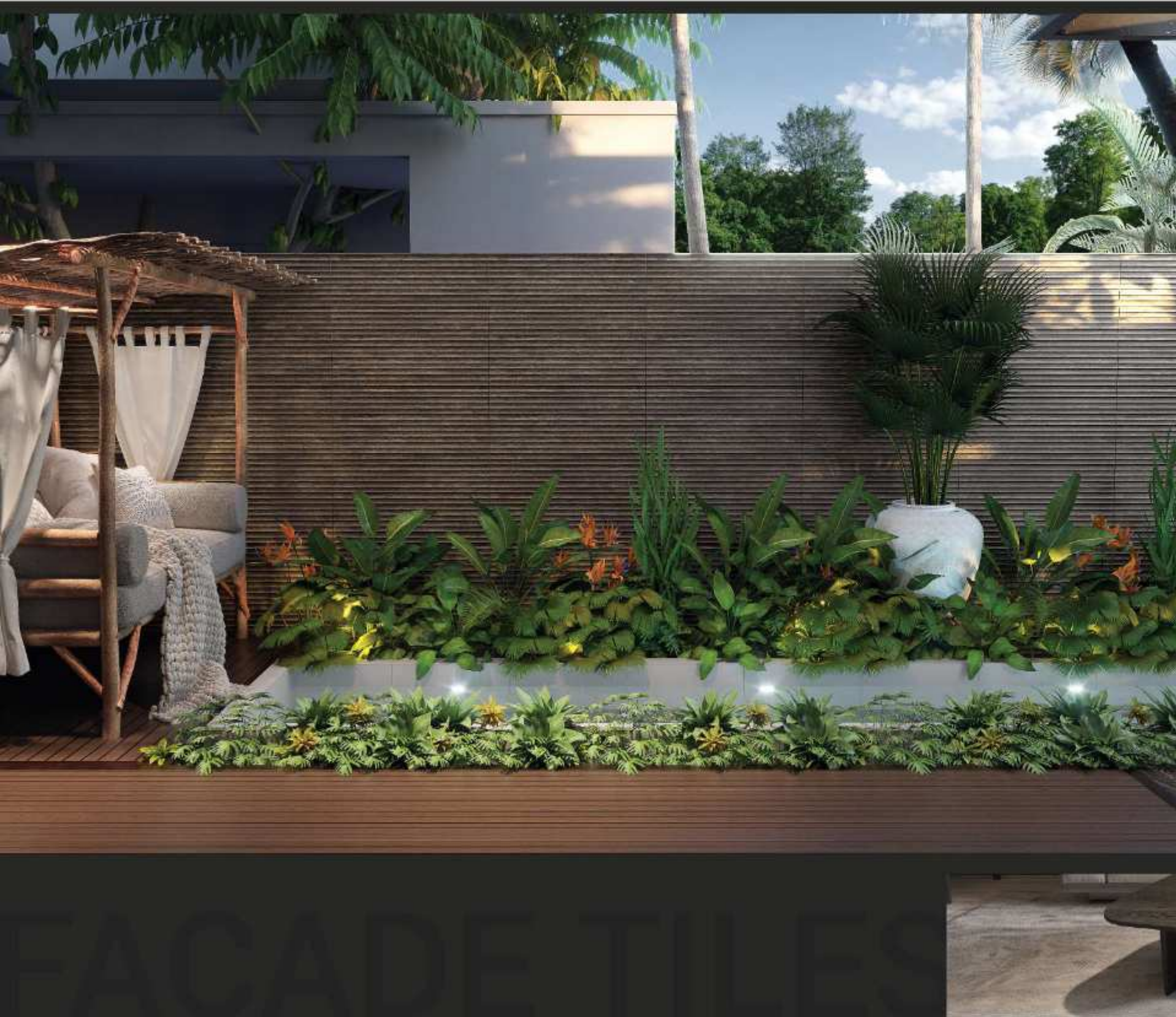
OCM3600036A



OC



OC



"FACADE punch tiles bring a dynamic, textured look to **any surface**, combining **durability with contemporary style**. Their embossed patterns create depth and visual interest, making them ideal for **both striking exteriors and feature walls**."



WALL



RECTIFIED



MATT



PUNCH

OC



WALL



RECTIFIED



MATT



PUNCH



MATT GLAZE | WALL TILE
300 X 600 MM

AVAILABLE FACES
01



OCMP3610003F



OCM3600045B



OC



OC



WALL



RECTIFIED



MATT



PUNCH



MATT GLAZE | WALL TILE
300 X 600 MM

AVAILABLE FACES
01



OCMP3610004F



OCM3600032A





LA
HOUSE

OC



WALL



RECTIFIED



MATT



PUNCH



MATT GLAZE | WALL TILE
300 X 600 MM

AVAILABLE FACES
01



OCMP3610005F



OCM3600028B



OC





"FACADE punch tiles in gray offer a perfect balance of subtlety and texture, bringing a refined, modern aesthetic to any space. Their versatile shade complements various design styles, adding depth and elegance to both interiors and exteriors."

OC



WALL



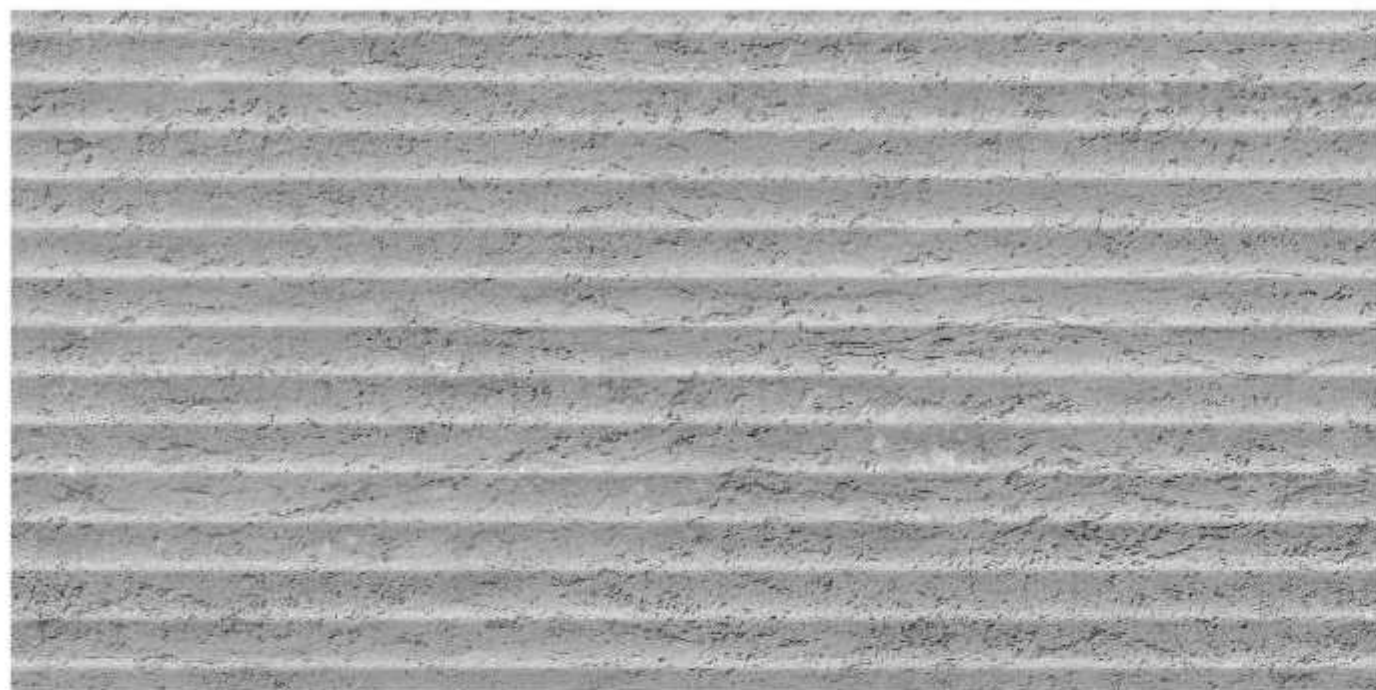
RECTIFIED



MATT

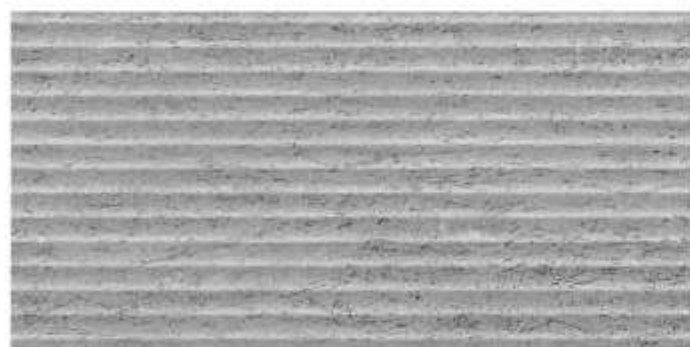


PUNCH



MATT GLAZE | WALL TILE
300 X 600 MM

AVAILABLE FACES
01



OCMP360006F



OCM3600037A





OC



"FACADE tiles are crafted for lasting beauty, giving your exteriors a sleek and modern finish. Their durable design ensures your spaces remain stylish and resilient against the elements."

OC



WALL



RECTIFIED



MATT

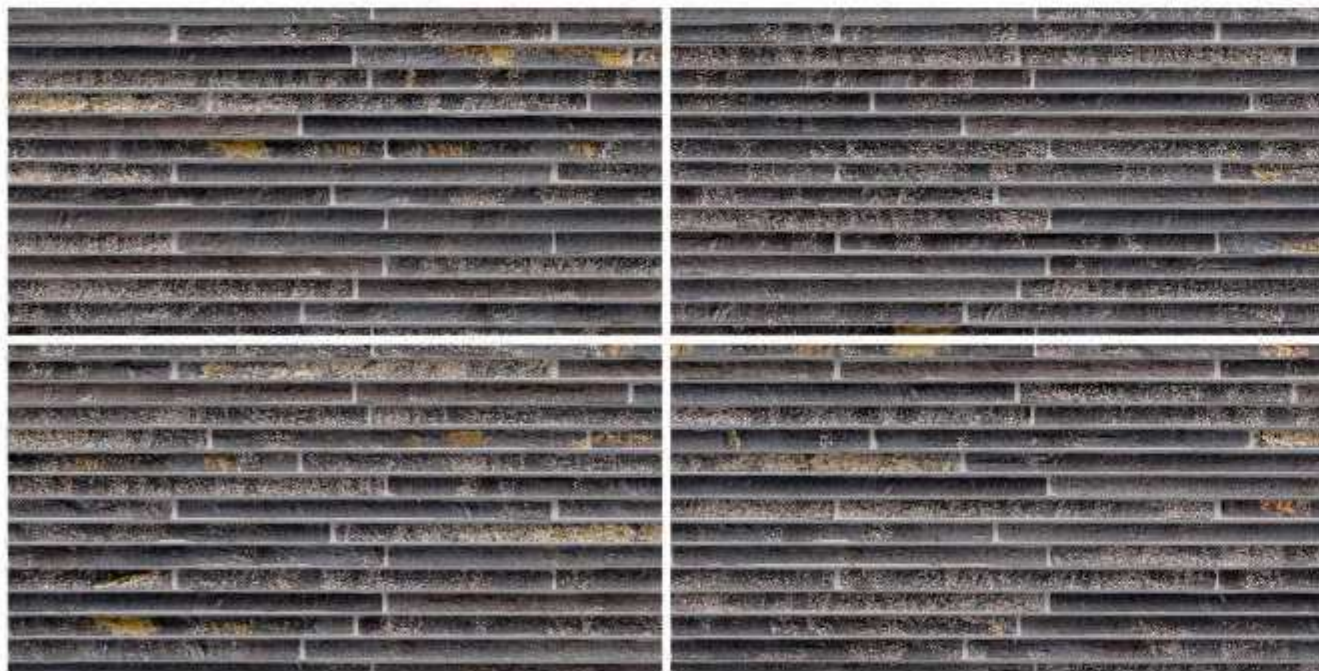


PUNCH



MATT GLAZE | WALL TILE
300 X 600 MM

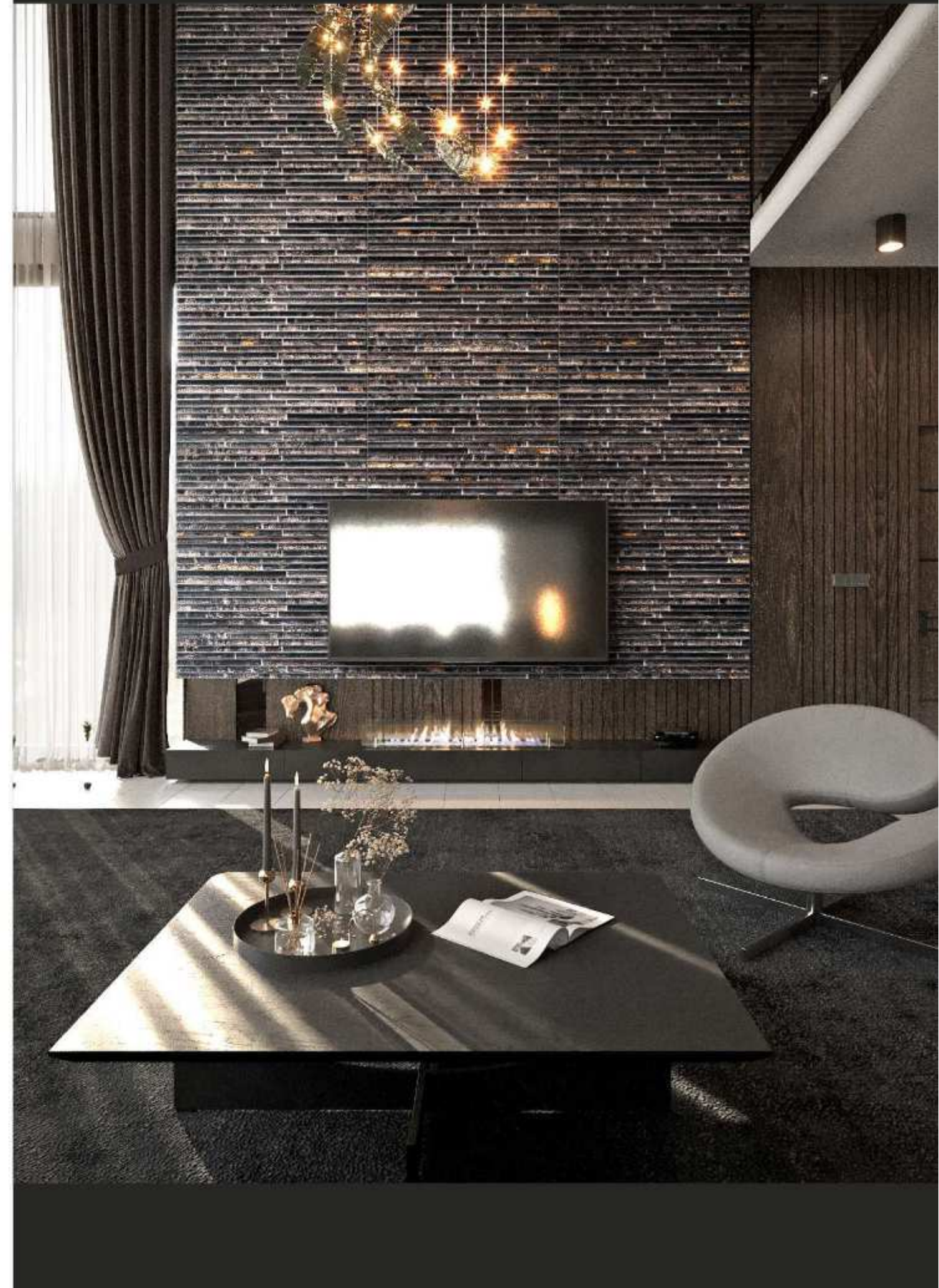
AVAILABLE FACES
04



OCMP3610007F



OCM3600024A



00



OC



"FACADE tiles from Ocean Ceramics are designed to elevate exterior spaces with their stylish durability and modern appeal. They provide a seamless blend of aesthetics and resilience, perfect for creating striking and long-lasting facades."

OC



WALL



RECTIFIED



MATT



PUNCH



MATT GLAZE | WALL TILE
300 X 600 MM

AVAILABLE FACES
04



OCMP3610008F



OCM3600035A



OC



OC



WALL



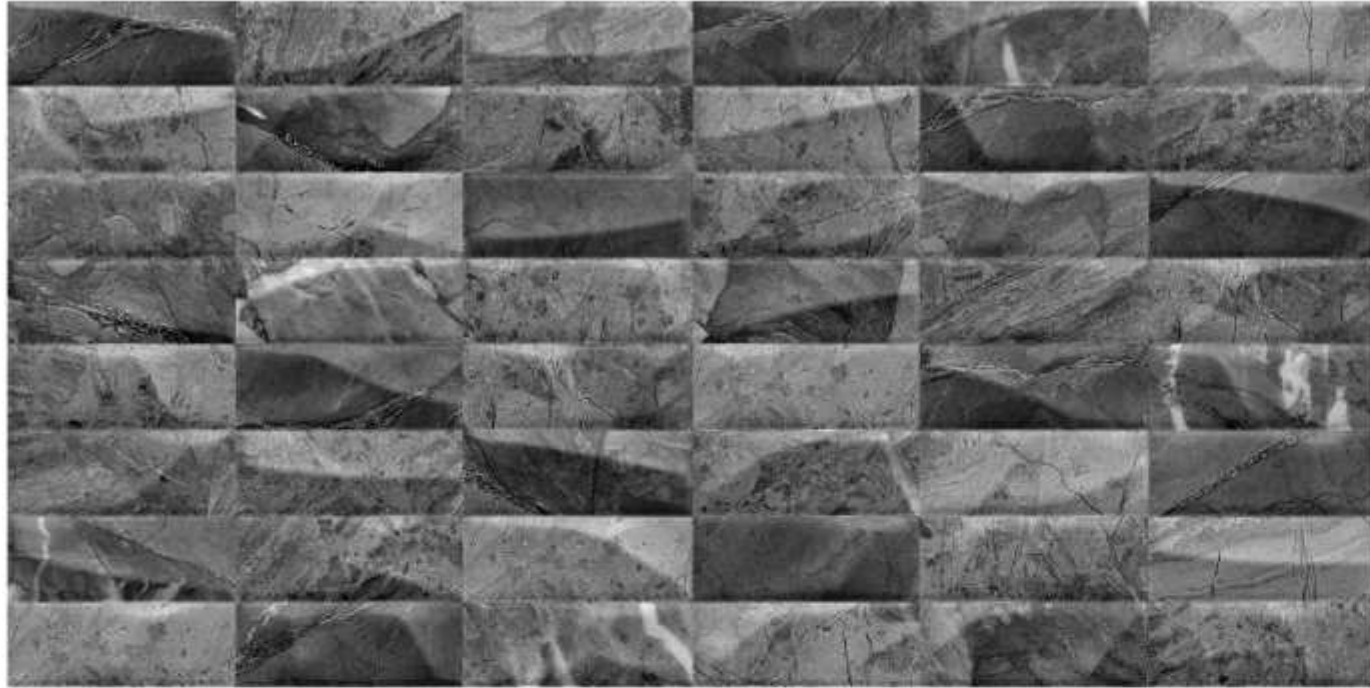
RECTIFIED



MATT

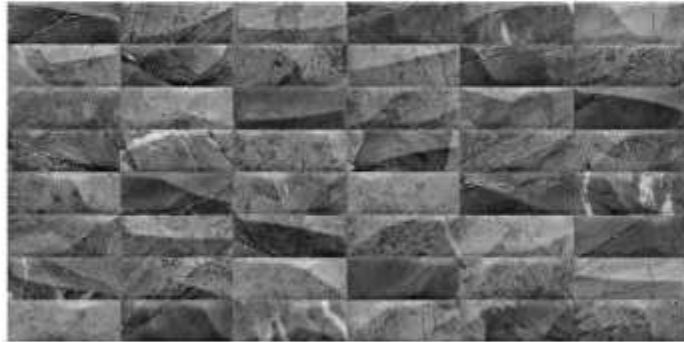


PUNCH



MATT GLAZE | WALL TILE
300 X 600 MM

AVAILABLE FACES
01



OCMP3610009F



OCM3600032A



00



OC



WALL



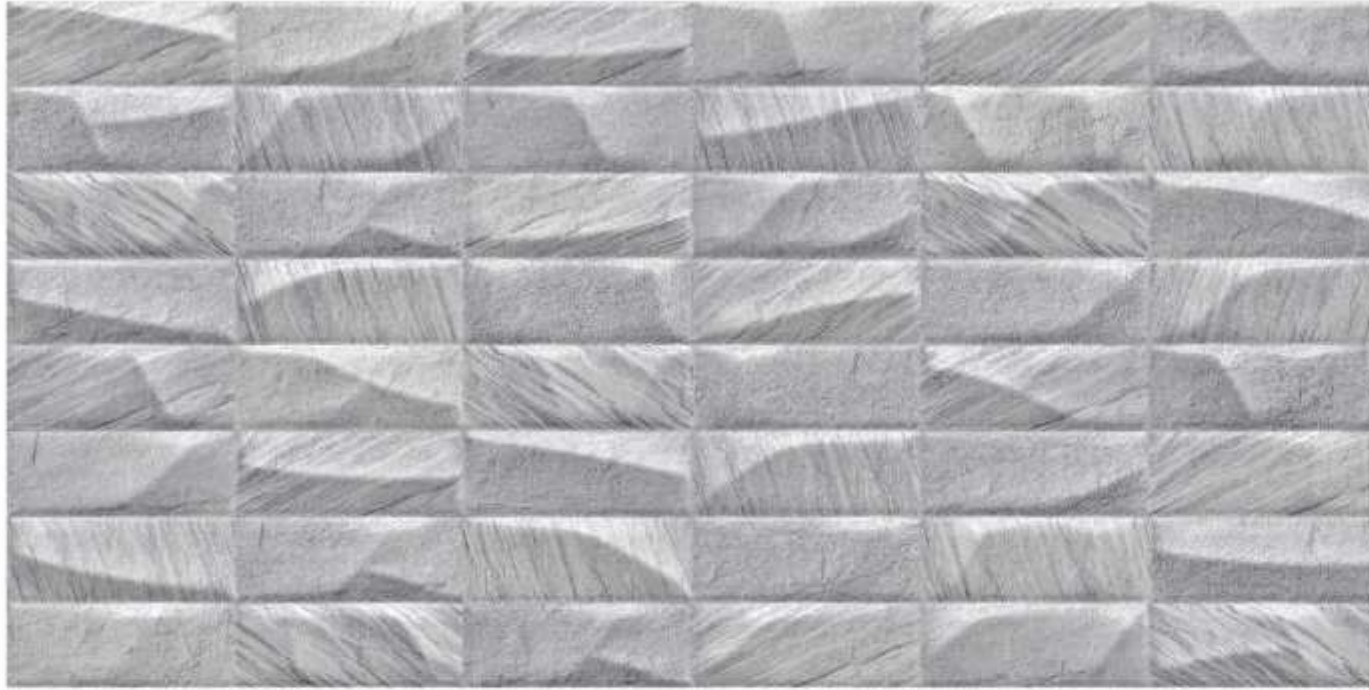
RECTIFIED



MATT

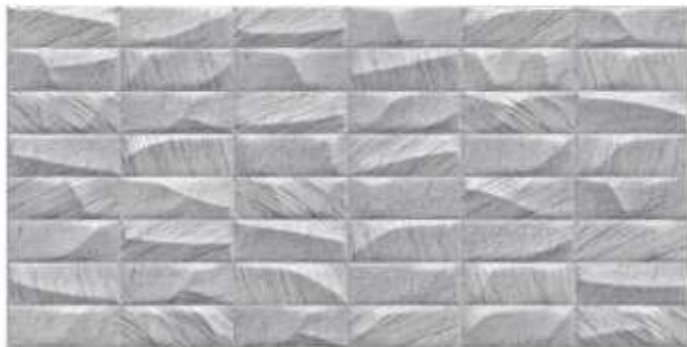


PUNCH



MATT GLAZE | WALL TILE
300 X 600 MM

AVAILABLE FACES
01



OCMP3610010F



OCM3600032B





OC



"FACADE tiles combine elegance and strength, enhancing your exterior spaces with a refined, modern look. Built to endure, they bring both beauty and durability to any outdoor setting."

OC



WALL



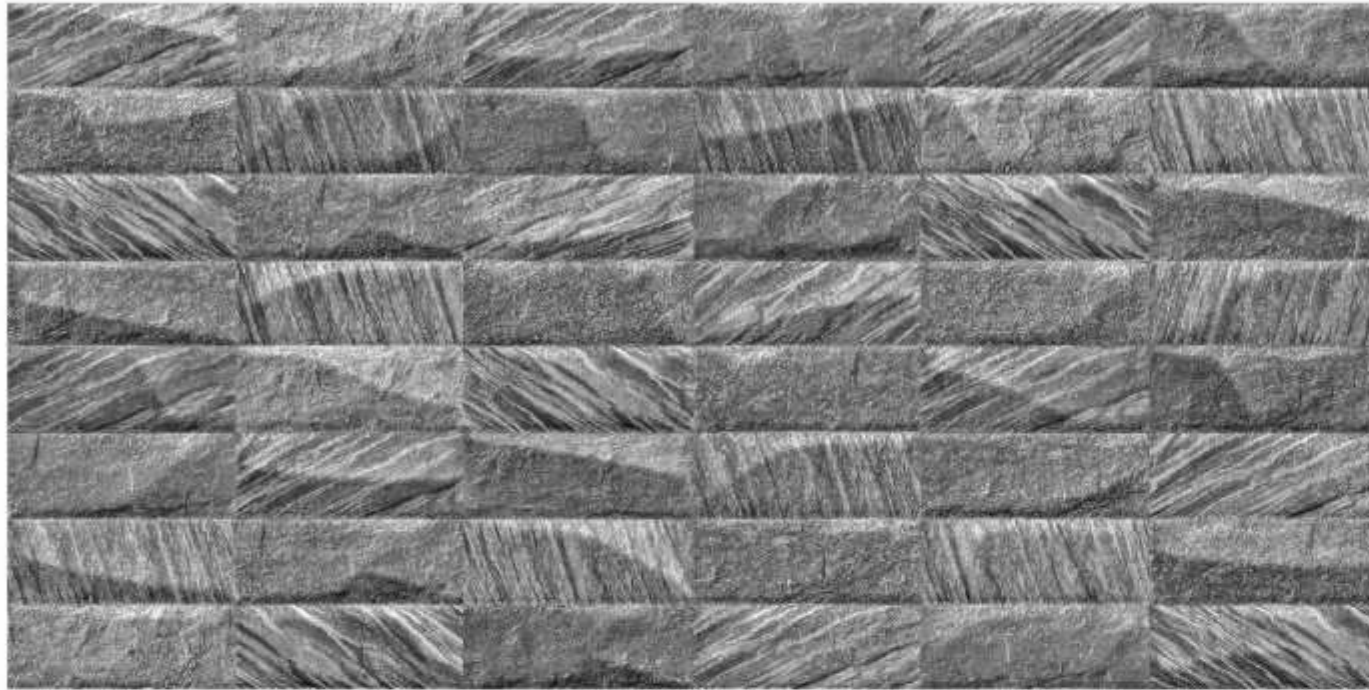
RECTIFIED



MATT



PUNCH



MATT GLAZE | WALL TILE
300 X 600 MM

AVAILABLE FACES
01



OCMP3610011F



OCM3600032B



OC



OC



WALL



RECTIFIED



MATT



PUNCH



MATT GLAZE | WALL TILE
300 X 600 MM

AVAILABLE FACES
01



OCMP3610012F



OCM3600007A





OC



WALL



RECTIFIED



MATT



PUNCH



MATT GLAZE | WALL TILE
300 X 600 MM

AVAILABLE FACES
01



OCMP3610013F



OCM3600035A





00

OC



"FACADE tiles offer a perfect blend of durability and style, making them ideal for creating striking and resilient exteriors. Their sleek design and robust build ensure your spaces look modern and elegant for years to come."

OC



WALL



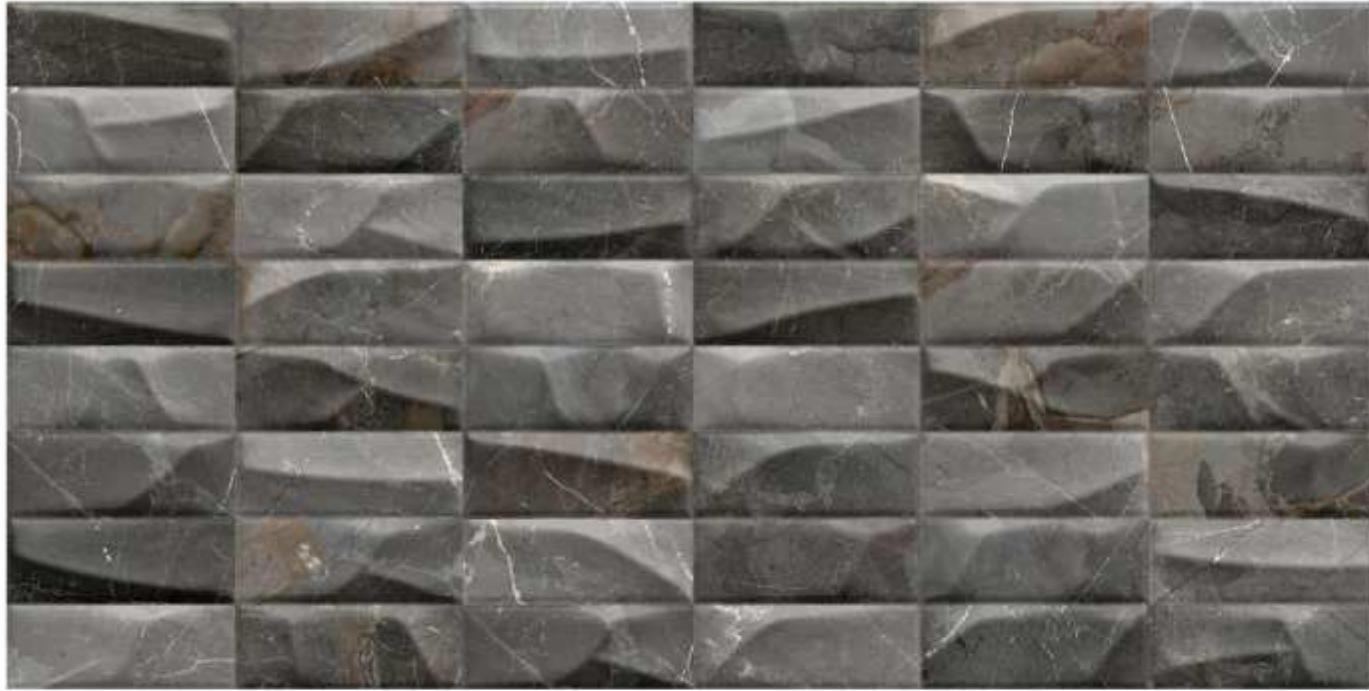
RECTIFIED



MATT



PUNCH



MATT GLAZE | WALL TILE
300 X 600 MM

AVAILABLE FACES
01



OCMP3610014F



OCM3600037B



OC



OC



WALL



RECTIFIED



MATT

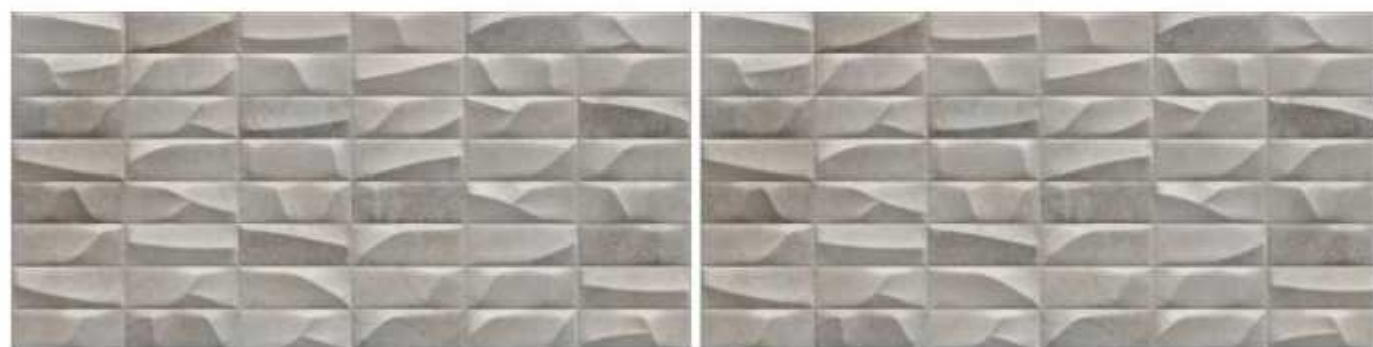


PUNCH



MATT GLAZE | WALL TILE
300 X 600 MM

AVAILABLE FACES
02



OCMP3610015F



OCM3600024A





OC



WALL



RECTIFIED



MATT



PUNCH



MATT GLAZE | WALL TILE
300 X 600 MM

AVAILABLE FACES
01



OCMP3610016F



OCM3600024A



OC



OC



WALL



RECTIFIED



MATT



PUNCH



MATT GLAZE | WALL TILE
300 X 600 MM

AVAILABLE FACES
01



OCMP3610017F



OCM3600043A





OC

OC



WALL



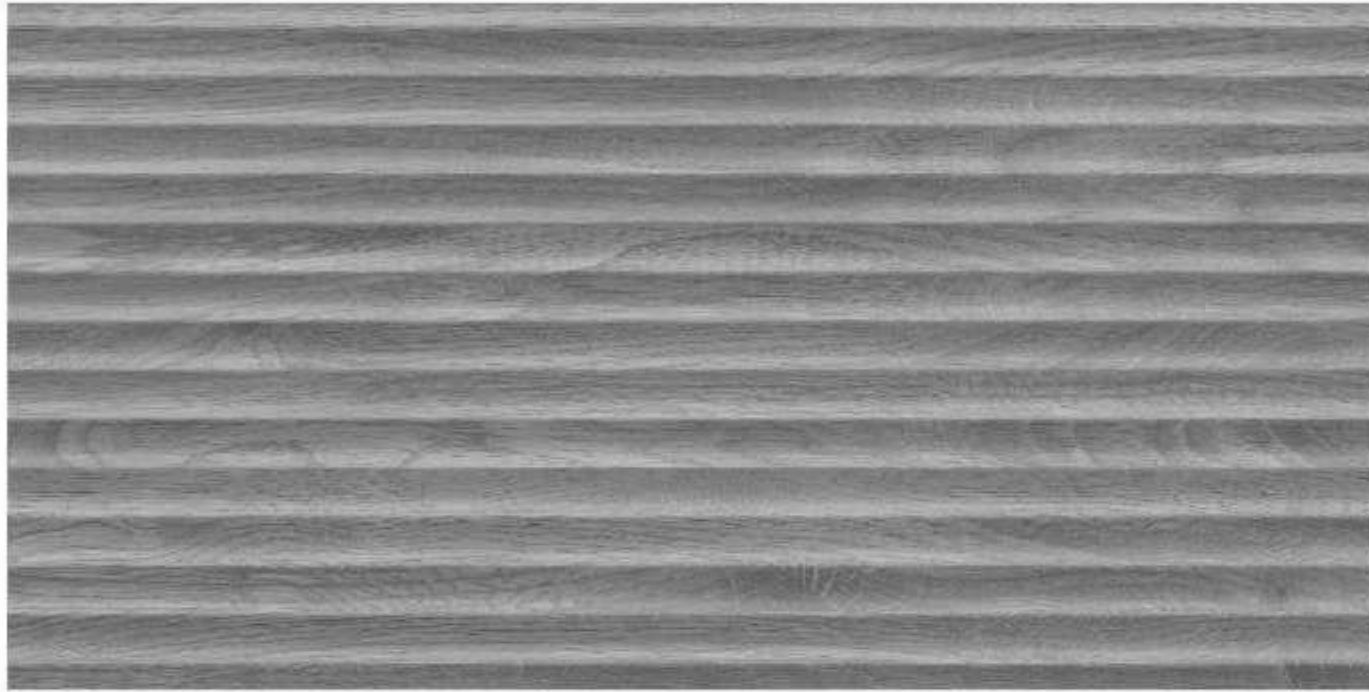
RECTIFIED



MATT

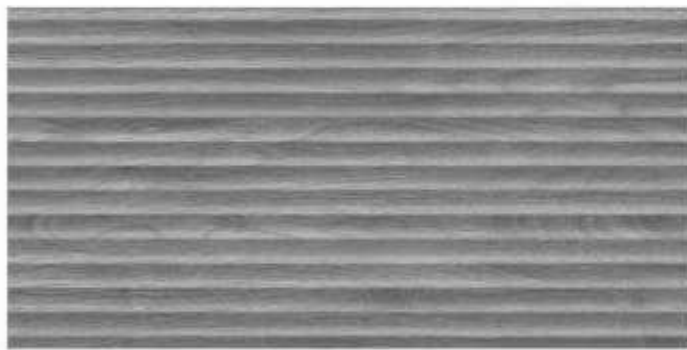


PUNCH



MATT GLAZE | WALL TILE
300 X 600 MM

AVAILABLE FACES
01



OCMP3610018F



OCM3600043A



OC





"FACADE tiles offer a perfect blend of durability and style, making them ideal for creating striking and resilient exteriors. Their sleek design and robust build ensure your spaces look modern and elegant for years to come."

OC



WALL



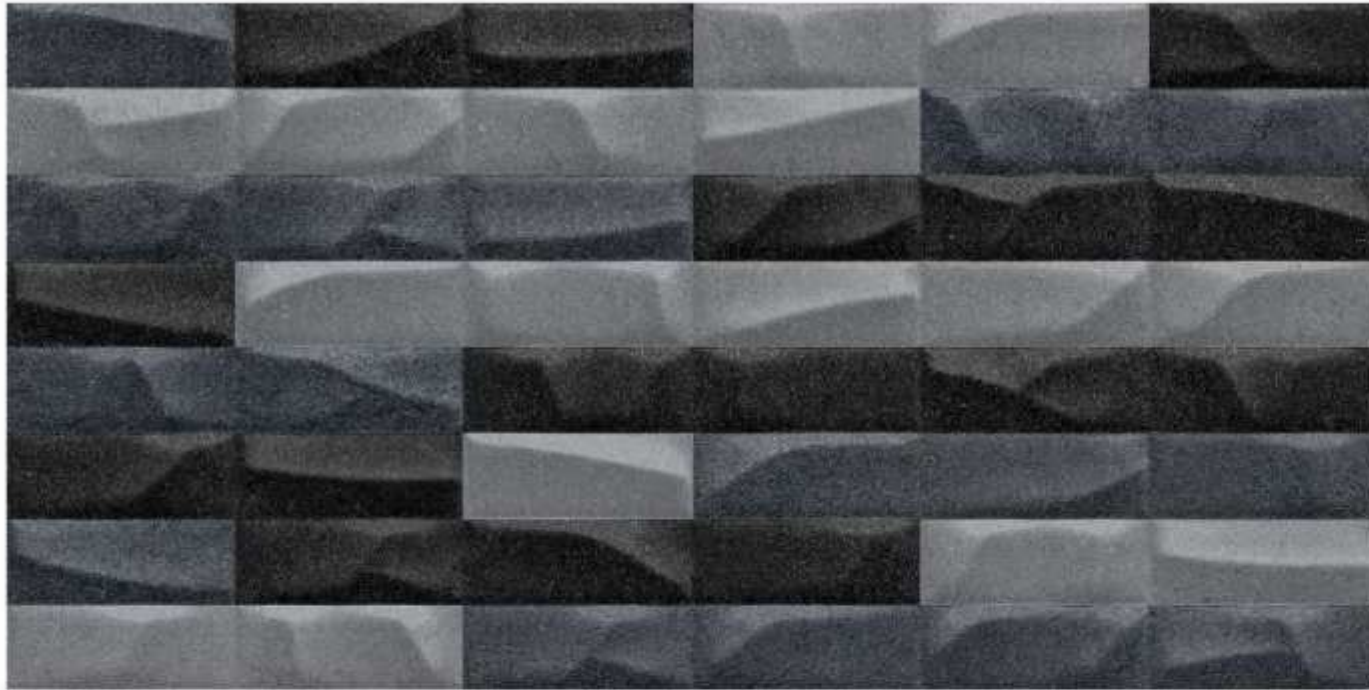
RECTIFIED



MATT

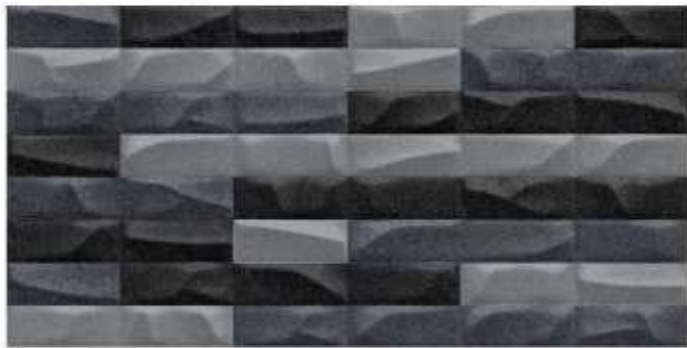


PUNCH



MATT GLAZE | WALL TILE
300 X 600 MM

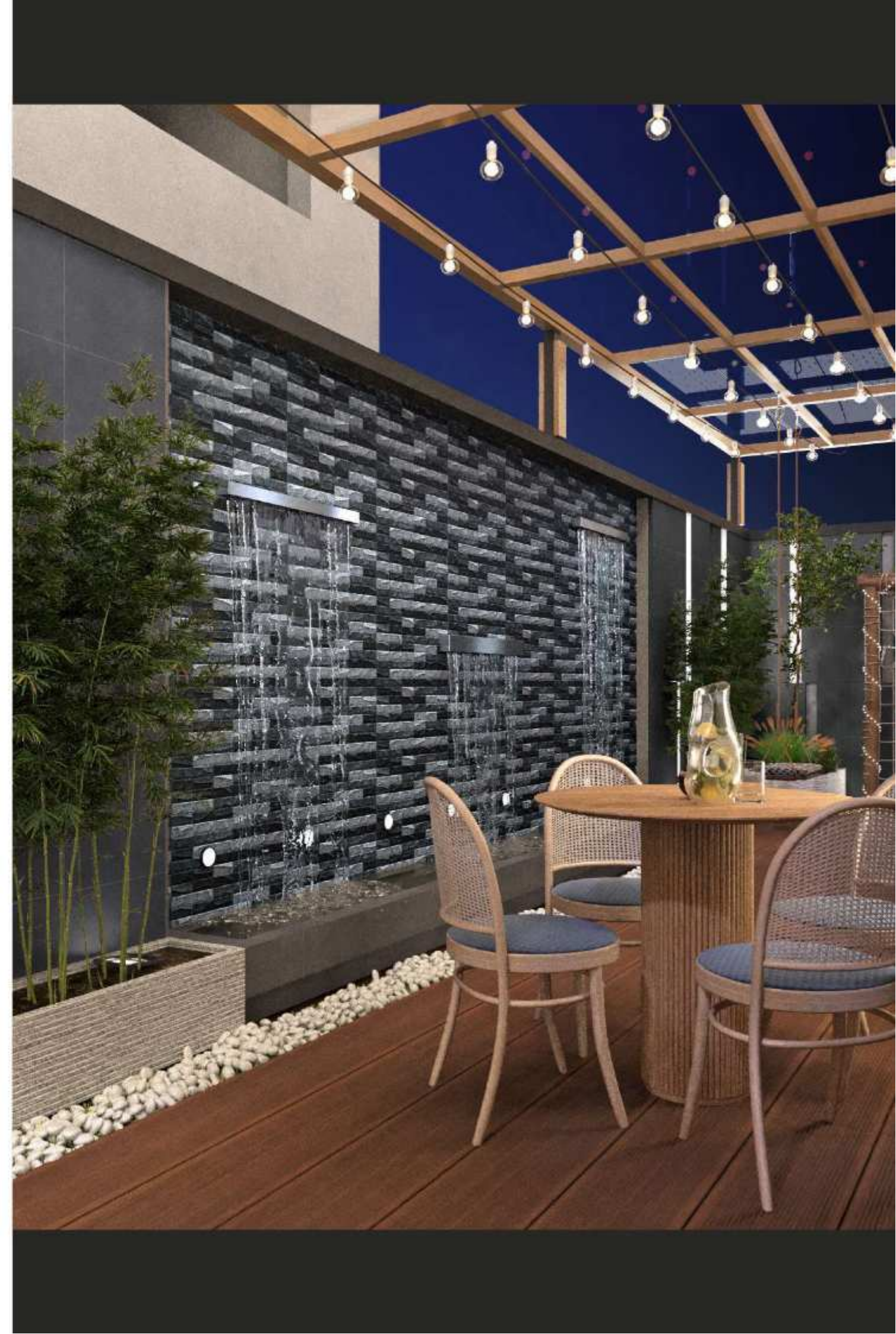
AVAILABLE FACES
01



OCMP3610019F



OCM3600032B





OC

OC



WALL



RECTIFIED



MATT



PUNCH



MATT GLAZE | WALL TILE
300 X 600 MM

AVAILABLE FACES
02



OCMP3610020F



OCM3600032A





OC



"FACADE tiles offer a perfect blend of durability and style, making them ideal for creating striking and resilient exteriors. Their sleek design and robust build ensure your spaces look modern and elegant for years to come."

OC



WALL



RECTIFIED



MATT



PUNCH



MATT GLAZE | WALL TILE
300 X 600 MM

AVAILABLE FACES
01



OCMP3610021F



OCM3600007A







"FACADE tiles seamlessly blend durability with contemporary design, enhancing exteriors with a modern and refined aesthetic. Perfect for withstanding the elements, they bring both style and strength to your outdoor spaces."

OC



WALL



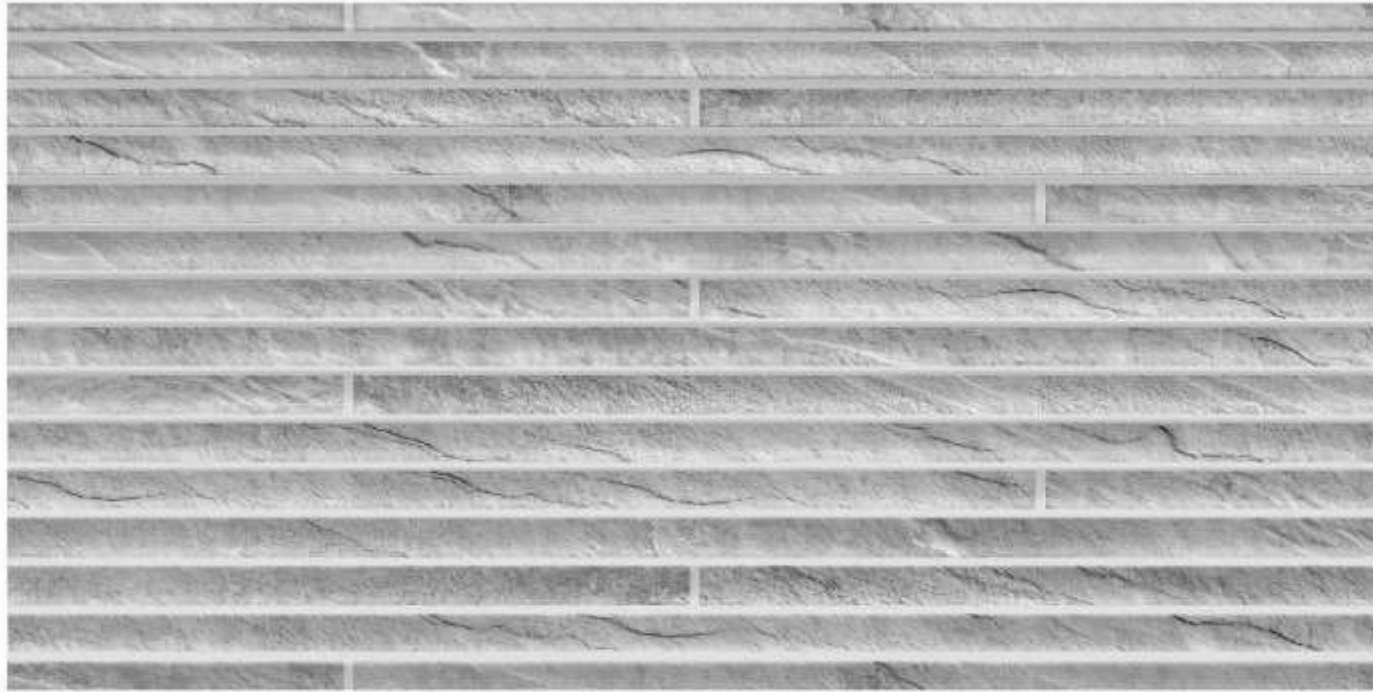
RECTIFIED



MATT

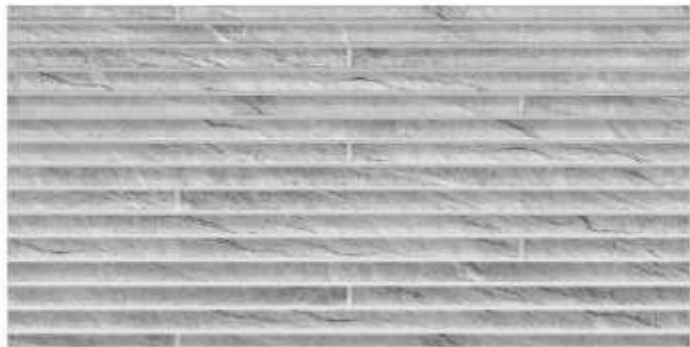


PUNCH



MATT GLAZE | WALL TILE
300 X 600 MM

AVAILABLE FACES
01



OCMP3610022F



OCM3600032B





Industry 4.0 system

Ocean is immersed in a process of digital transformation, which allows us better control our operations at production levels in our manufacturing premises. This has a direct impact on the improvement of our productive efficiency, as well as on the quality we offer to our customers.

Thanks to the implementation of several consulting actions within the frame of the Activa Industria 4.0 initiative, Ocean has set a roadmap for its digital transformation, which is reflected in a set of actions to be undertaken by the company in order to improve its own standards of digitalization and adapt to the necessities of the 4.0 industry.

Ocean also collaborates with the ITC Institute in the development of the TwinXdustry project, in which we are validating and defining a new methodology for the implementation of Digital Twins in manufacturing plants all around the industrial network of the Valencian Community.

The Digital Twin is a key element in the paradigm of the 4.0 Industry, and it is defined as a virtual black print of the manufacturing process, permanently updated as compared to the physical reality at the plant by means of a series of sensors and communication elements.

The digital twin has an array of simulation tools, which enables us to make predictions about the future behaviour of the real manufacturing process.

Eco Philosophy

In 2024, we proudly achieved the "Zero Waste" verification statement for our facilities. This remarkable recognition was awarded by SGS, confirming that we have made significant steps in sustainable practices. This is a true statement to our commitment to the environment and the planet.

This "Zero Waste" environmental certification acknowledges our efforts to minimize waste and maximize resource efficiency. And it is a clear indication that more than 99% of the waste generated at all our facilities is recycled or carefully reused in our production processes. In addition, any surplus waste that cannot be used internally is responsibly handed over to accredited companies, ensuring that landfill disposal is avoided altogether. Furthermore, we have not restricted ourselves to waste management, but have also made great steps in manufacturing products that leave a much smaller footprint on the planet, successfully incorporating some recycled content in their raw materials.

In Ocean we are also known by constant investments in energy efficiency systems, applying the most advanced and efficient technologies, by having atmospheric emissions under control in order to minimize the environmental impact generated during our manufacturing process, by the zero discharge of the waste water generated, and by the quality and long life cycle of our product, and its low environmental impact.

Ocean's commitment to sustainability is perfectly summarized in our philosophy: increase value and reduce footprint. By making more valuable products, we have at the same time reduced our ecological footprint and laid one of the foundations of the circular economy.

Our forests, rivers, oceans and soils provide us with the food we eat, the air we breathe, the water we irrigate our crops with.

Together, We Can!



FIND US ON A CLICK



@oceanceramicspk



Although the relationship with our customers is built with the long term in mind, they also need to be constantly supplied in an proactive way in terms of communication in a modern and immediate way.

With this objective, together with that of getting to know better all those who are interested in our products and our activity, both our website and our social networks allow us to have a live and direct communication channel with which we can inform in real time and give a personalised answer to any needs that our customers may have.

UAN : +92 42 111 678 786

www.oceanceramics.pk

info@oceanceramics.pk

Factory:

61-65, Allame Iqbal Industrial City,
M4 Faisalabad, Pakistan



Together, We Can!

ocean
ceramics

OC

Together, We Can!